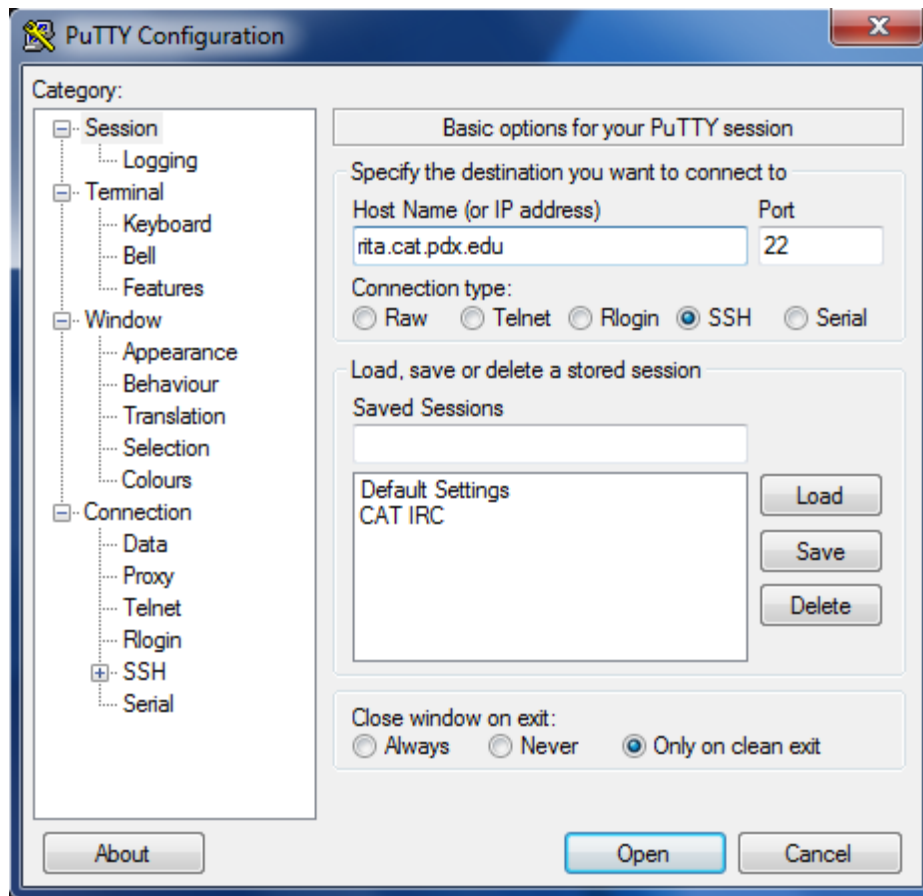


Instructions on how to join IRC and #ecechat

Windows Users

Download and run PuTTY. In the “Host Name (or IP address)” box, type “rita.cat.pdx.edu”. Type “CAT IRC” in the “Saved Sessions” box and then click the “Save” button. From now on you can just double click on “CAT IRC” in the bottom window to connect.



The first time you connect, a message will pop up warning you about the server host key. Click on yes to add the key PuTTY's cache and connect. Once connected, use the Linux username and password you have received from the CAT.

Linux Users

From a command prompt, type the following:

```
ssh rita.cat.pdx.edu
```

Log in with the username and password given to you by the CAT.

Everybody

After you are logged in, type the word “screen” and hit enter. Screen allows you to stay logged into the IRC server after you have disconnected your computer from Rita. This is extremely

helpful as you can connect to the IRC server, ask a question in the chat room, and then come back at a later time to see if your question has been answered. Without using a “screen”, you will not be able to see any activity in the chat room that has occurred before you are connected. You can type in “screen -help” to get a list of commonly used screen commands.

After typing “screen”, hit enter until you are returned to a prompt. Now type in “irssi”. This is the program that allows you to connect to the IRC server and chat rooms.

Once in IRSSI, type in:

```
/connect irc.cat.pdx.edu
```

You will now be connected to the CAT’s IRC server. Now type the following:

```
/join #ecechat
```

That’s it, you are connected to #ecechat and can hopefully get some answers to your questions.

When you are done chatting on IRC, press and hold down CTRL and A at the same time, release, then press D. You will notice that you are returned to Rita’s command prompt. Even though you aren’t running IRSSI anymore, the screen that you set up earlier is still connected. If you type in “screen -r” you will be reattached to your screen and put back in the same chat room as when you detached yourself. As long as you keep your screen attached Rita stays running, which is usually all term long, you need not reconnect to the IRC server and #ecechat every time you log in, just reattach your screen.